

COMPANY PROFILE



PT. Seongsan International



Vision & Mission

VISION

- Become the largest supplier of Synthetic Rubber in Indonesia
- Become the best rubber compounding manufacture in Indonesia

MISSION

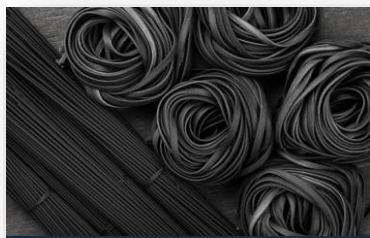
- Facilitating rubber needs in Indonesia
- Providing high quality products at competitive prices
- Becoming a trusted partner in terms of service and quality



About The Company

PT. Seongsan International was established in 2011 started to supply synthetic rubbers to Indonesian market. Currently PT. Seongsan International has developed rapidly, not only supplying synthetic rubbers but several other rubber chemicals.

PT. Seongsan International is now expanding the business scope from the trading to manufacturing and managing of bonded warehouse. PT. Seongsan International is starting to build own rubber compounding factory to give more choices for the customers and bonded warehouse facility.



Rubber Sheet



Synthetic Resin

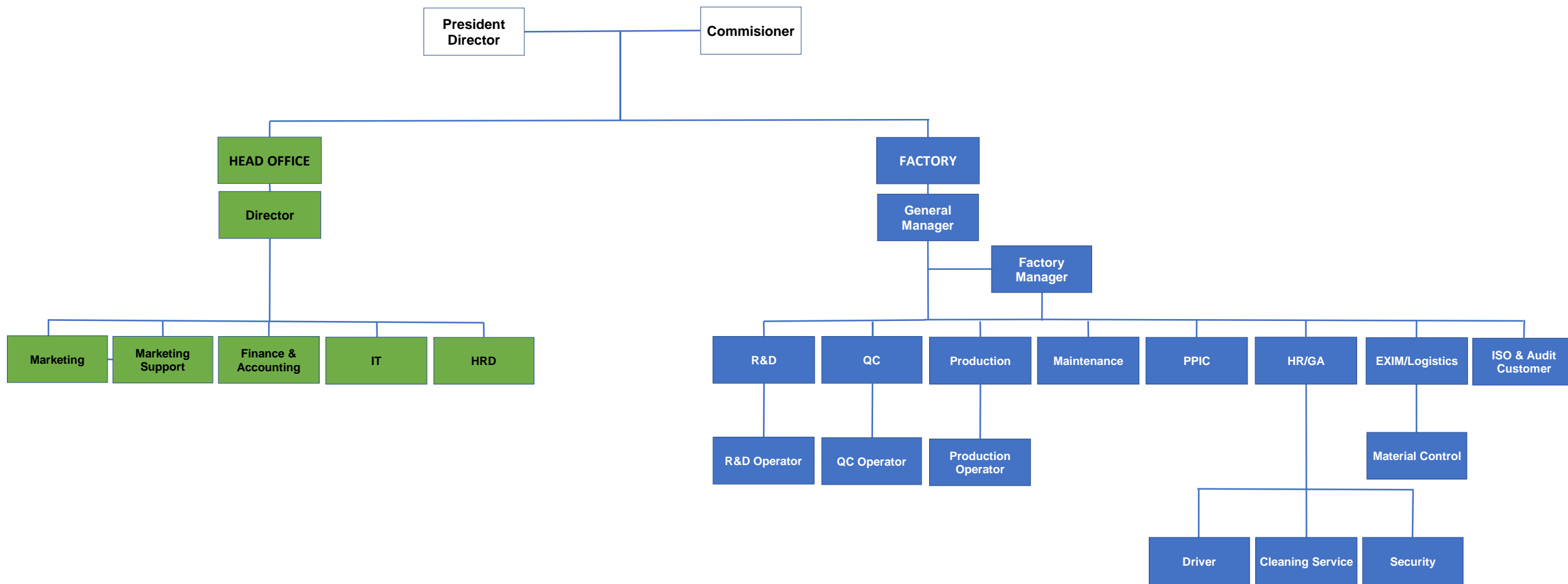


Synthetic Rubber



Rubber Chemical

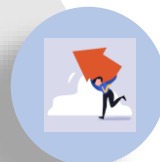
Organization Structure



Why PT. Seongsan International

WHY
CHOOSE
US

Our services are covering
from finding suitable raw
materials to make
compounding formula and
manufacture of rubber
sheets



High Technical Skills

Professional R&D and production people

Strong Technical Back-Up

Supported by Central R&D Center of
Kumho Polychem

Management

Managed by Korean managements and
production

Stable Securing of Raw Materials

Ensure a stable, secure and sustainable supply of
raw material

Management System



Raw Material

- FIFO System
- Material Addressing
- Min/Max stock level
- Min Qty stock control 2 Months



Production System

- Semi automatic Weighing
- Production Process Flow Chart
- Regularly machine maintenance



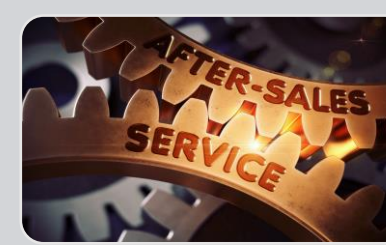
Quality System

- QCPC
- CoA every lot for traceability
- Internal / External Audit
- Tooling calibration



Storage & Delivery System

- Cooling Room (FMB)
- CMB storage area
- Ontime delivery
- Hold / NG Product area



After Sales Service

- Regularly technical support
- Quick response follow up within 24 hrs

How To Develop New Project



Rubber Compound

CMB

- We provide CMB (Compound Master Batch) which mixture of polymers together with vulcanizing agent to make rubber compound covering the range of hardness from 30 to 90 (Shore A).



FMB

- We provide FMB (Final Master Batch) which the final product of rubber compound after curing. We can produce customized size as customer request.



Mixing Service

- We also can support you for mixing service of rubber compound as requested.



Types Of Compound (CMB & FMB)

- EPDM (Ethylene Propylene Diene Monomer)
- NBR - PVC
- NBR (Acrylonitrile Butadiene Rubber)
- SBR (Styrene Butadiene Rubber)
- BR (Butadiene Rubber)
- Silicone Rubber
- NR (Natural Rubber)



Factory Facilities

No	Facility	Qty	UoM	Capacity
MACHINE (PRODUCTION)				
1	150 L Kneader	2	Units	250 MT/Month (1 shift)
	a. 22 Inch Open Roll	2	Units	
	b. 22 Inch Blender Open Roll	2	Units	
	c. Batch Off Machine	2	Units	
2	110 L Kneader	2	Units	200 MT/Month (1 shift)
	a. 22 Inch Open Roll	2	Units	
	b. 22 Inch Blender Open Roll	2	Units	
	c. Batch Off Machine	2	Units	
3	Rubber Cutting Machine	1	Unit	
4	Rubber Slitting Machine	2	Units	

No	Facility	Qty	UoM
LABORATORY EQUIPMENT			
1	Rheometer	3	Unit
2	Mooney Viscometer	3	Unit
3	Hardness Tester	2	Pcs
4	Tensile Tester	1	Unit
5	Oven Aging Tester	1	Unit
6	Specific Gravity Meter	1	Unit
7	Thickness Tester	2	Unit
8	Teclock Hardness with Gauge	2	Pcs
9	Ozone Test Machine	1	Unit

Factory Facilities

No	Facility	Qty	UoM
R & D TESTING EQUIPMENT			
1	2 L Dispersion Kneader	1	Unit
2	6 inch Open Mill	3	Unit
3	50T Curing Press	2	Pcs

No	Facility	Qty	Area
WEIGHING CHEMICAL ROOM			
1	Semi Automatic Weighing	55	m ²

No	Facility	Qty	Area
WAREHOUSE			
1	Storage of Material	266	m ²

No	Facility	Qty	UoM
DELIVERY			
1	Trucking	2	Unit

Factory Facilities (Weighing, Production & Storage)



110L Kneader



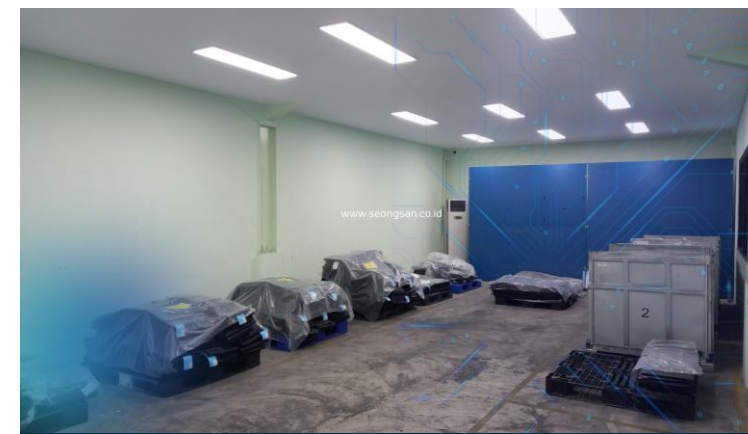
150L Kneader



Slitting Machine



Chemical Weighing



Cooling Room

Factory Facilities (Laboratory)



Factory Facilities (Laboratory)



Factory Facilities (R&D)



2L Dispersion Kneader

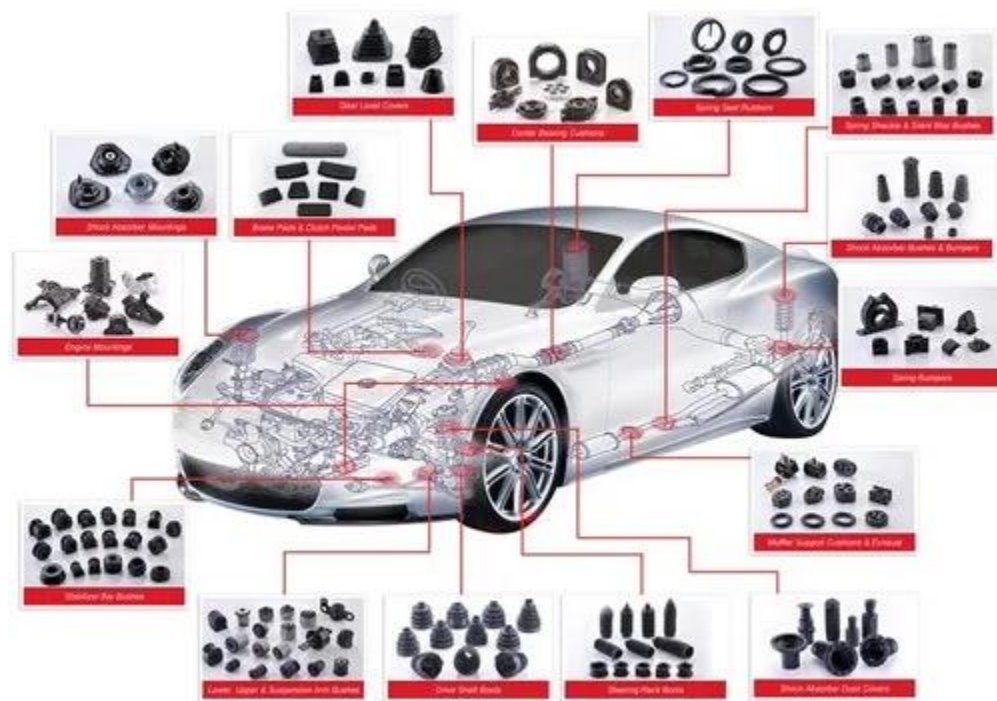


6 Inch Open Mill

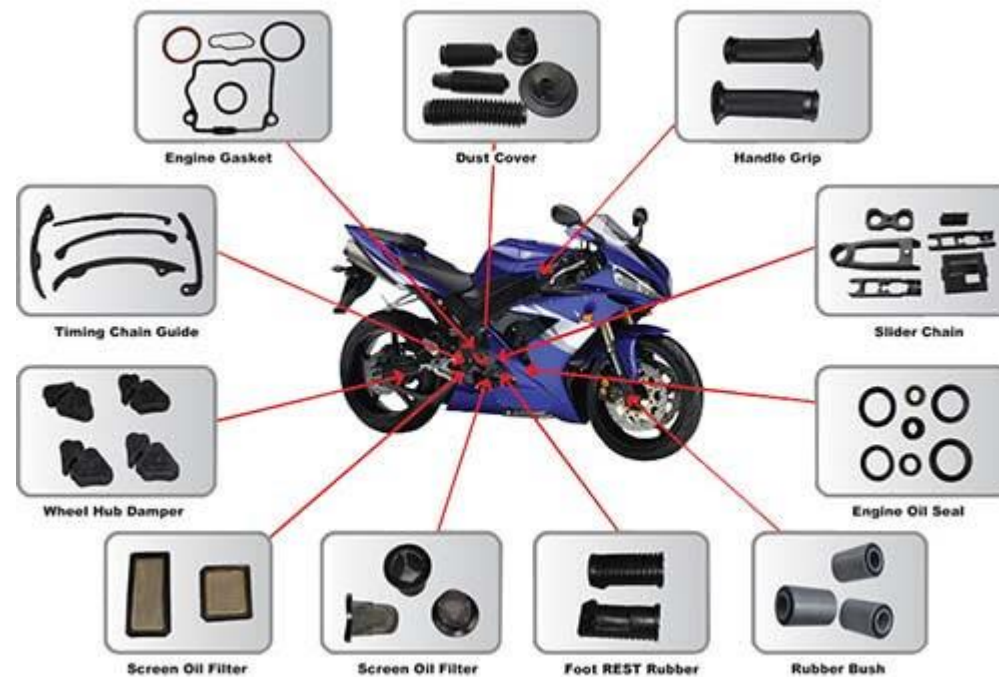


50T Curing Press

Markets - Automotive



Car Rubber Component



Motorcycle Rubber Component

Markets - Shoes



Markets - Tire



Car Tire



Inner Tube



Motorcycle Tire

Markets - Industries



Rubber Fender



Conveyor Belt

Markets - Houseware



Washing Machine Rubber Component



Refrigerator Rubber Component



Another Appliances

Management System Accreditation




Registration no.	KQ 243330	IAF Code	14
First issue date	2024-03-29	Issue date	2024-03-29
Expiry date	2027-03-28	Reissue date	

CERTIFICATE

Quality Management System Certificate
KS Q ISO 9001:2015/ISO 9001:2015

We certify that the Quality Management System of the Organization:
PT. SEONGSAN INTERNATIONAL

Is in compliance with the standard KS Q ISO 9001:2015/ISO 9001:2015 for the following products/services:

Design, development and manufacture of rubber compounds(natural,synthetic, synthetic resin, EPDM)

General Manager
Seung-Chan Lee



Maintenance of the certification is subject to continual surveillance audit and dependent upon the observance of Kiwa Korea's certification criteria.

Kiwa Korea Ltd.
411, SJ Technoville,
278, Beotkkot-ro,
Geumcheon-gu,
Seoul, Korea
Tel +82 2 3397 0101
Fax +82 2 3397 0105
URL: www.kiwa.kr

Certified Sites
Kawasan Taman Industri Busan Block B4, Desa/Kelurahan Kutruk, Kec. Jambé,Kab. Tangerang, Provinsi Banten, Indonesia



KAB-QC-34

ISO 9001 : 2015




Registration no.	KE 242031	IAF Code	14
First issue date	2024-03-29	Issue date	2024-03-29
Expiry date	2027-03-28	Reissue date	

CERTIFICATE

Environmental Management System Certificate
KS I ISO 14001:2015/ISO 14001:2015

We certify that the Environmental Management System of the Organization:
PT. SEONGSAN INTERNATIONAL

Is in compliance with the standard KS I ISO 14001:2015/ISO 14001:2015 for the following products/services:

Design, development and manufacture of rubber compounds(natural,synthetic, synthetic resin, EPDM)

General Manager
Seung-Chan Lee



Maintenance of the certification is subject to continual surveillance audit and dependent upon the observance of Kiwa Korea's certification criteria.

Kiwa Korea Ltd.
411, SJ Technoville,
278, Beotkkot-ro,
Geumcheon-gu,
Seoul, Korea
Tel +82 2 3397 0101
Fax +82 2 3397 0105
URL: www.kiwa.kr

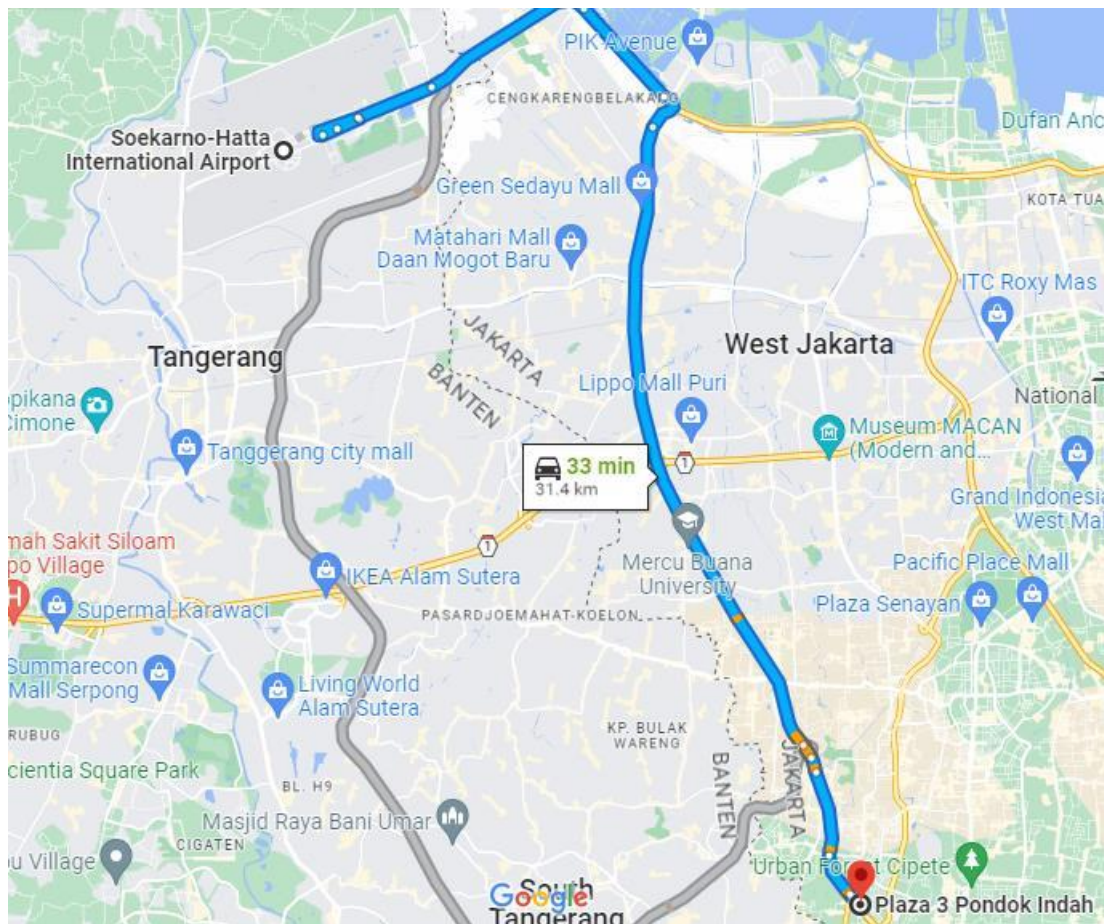
Certified Sites
Kawasan Taman Industri Busan Block B4, Desa/Kelurahan Kutruk, Kec. Jambé,Kab. Tangerang, Provinsi Banten, Indonesia



KAB-EC-21

ISO 14001 : 2015

Company Information



HEAD OFFICE



Telp

+62-21-22764126

+62-21-75904705



Email

yjpark@seongsan.co.id

swpark@seongsan.co.id

annisaoh@seongsan.co.id



Address

Plaza 3 Pondok Indah blok E no.7

Jl. TB Simatupang Pondok Pinang Jakarta Selatan

FACTORY



Address

Kawasan Taman Industri Busan blok B4 Jl. Raya Kutruk, Tigaraksa, Cikupa Kab. Tangerang



Product

Compound Master Batch
Rubber Sheet



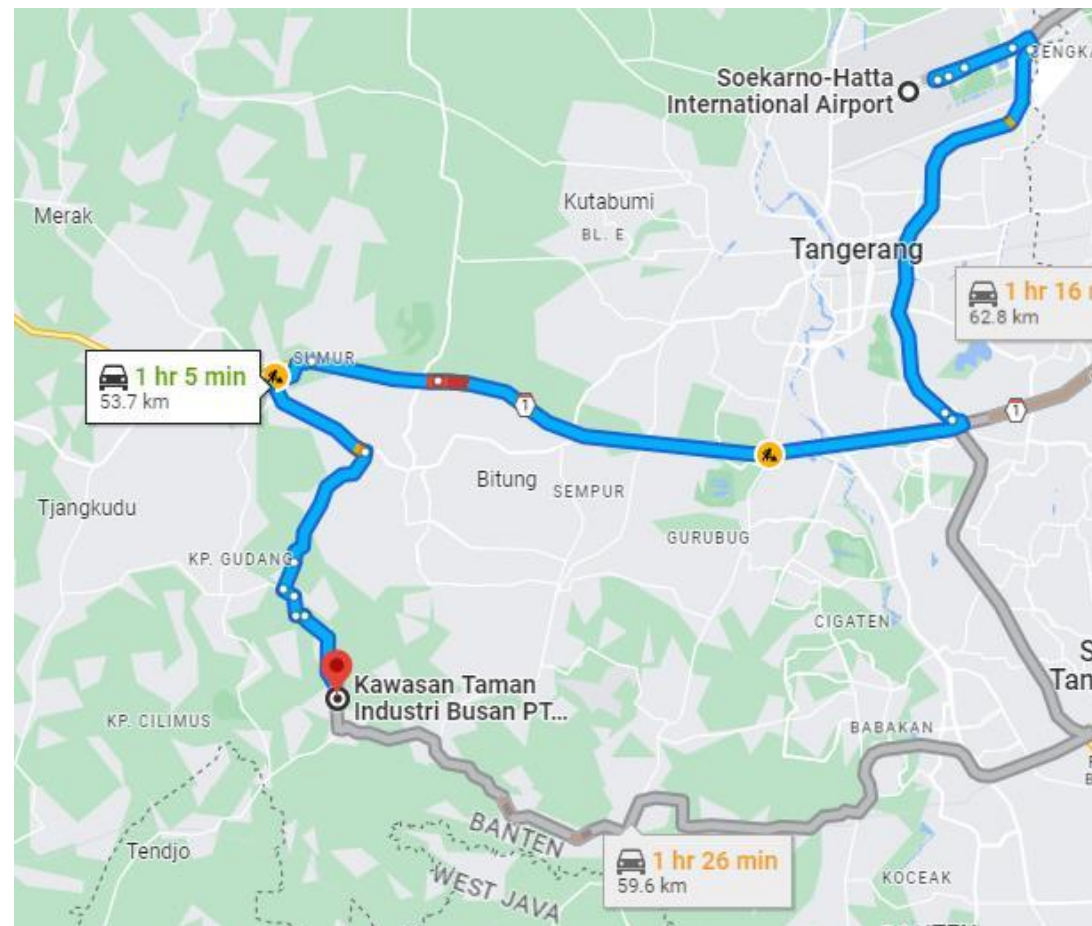
Production

450 MT / month (1 shift)



Factory

Land area - 12,500 m²
Building - 4,196 m²
Warehouse - 1,020 m²





Thank you
Let's Cooperate!